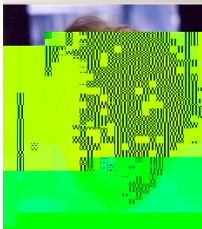


Richard Virr and Janine Schmidt took Lee McClenny from the United States Consulate General Montreal on a tour of the Library's Abraham Lincoln Exhibition



**JANINE SCHMIDT,**  
TRENHOLME DIRECTOR  
OF LIBRARIES OF SFU

We know that the Library is purchasing increasing numbers of e-books and that users are reading them in growing numbers. Until now, we have purchased most of them for use by our faculty and student on laptops and PCs via our library website, although some are being used by some of our clients via PDAs and other mobile devices. Recent articles in *The Electronic Journal of Information Technology* (<http://www.ejournals.org/ejournals/ejournals.com/doi/10.1080/15393100802287000>) and *Electronic Journal of Information Technology* (<http://www.ejournals.org/ejournals/ejournals.com/doi/10.1080/15393100802287000>) have highlighted the growth – the future is indeed now. Lisa Charters, Senior Vice-President of Digital Production for Random House was quoted as saying *E-books in education, on an individual level, and in the classroom are one of the most significant changes in the near future, as well*

as lending real books, e-books, iPods, and laptops, we may indeed be lending e-book readers like the Sony Reader and Amazon's Kindle.

Our current exhibitions have proved to be very popular. The celebration of Abraham Lincoln's 200th birthday on February 12th led to an exhibition on the foyer of level 4 of the McLennan Library Building of selected items from the Joseph N. Nathanson Collection of Lincolniana.

The Nathanson Lincoln Collection is one of the most unusual research collections housed in Rare Books and Special Collection. In 1986, Dr. Joseph N. Nathanson (1895-1989) donated to his alma mater, the contents of his eclectic Abraham Lincoln collection. For almost fifty years, Dr. Nathanson avidly collected Lincolniana

CONTINUED ON PAGE 2

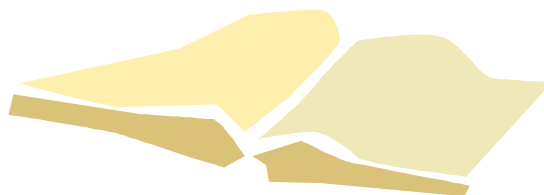
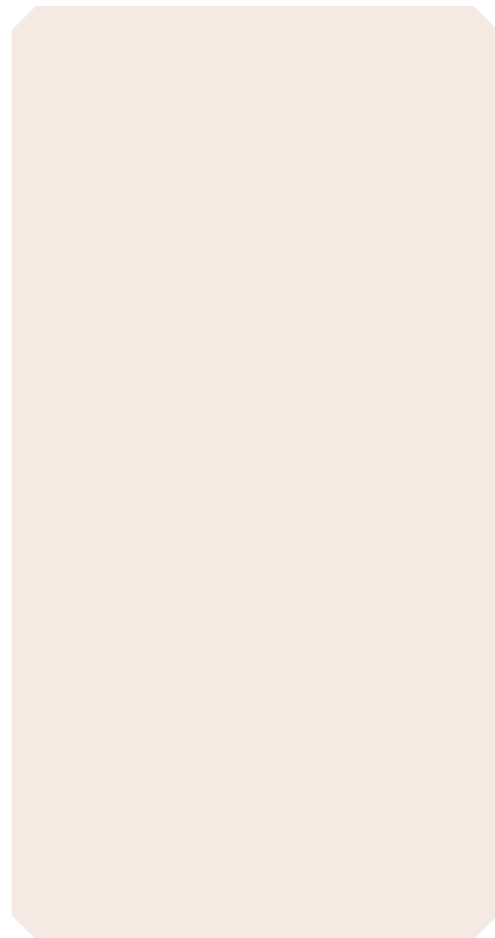
FROM THE DIRECTOR - CONTINUED FROM PAGE 1

from his base in Ithaca, New York where he taught Obstetrics and Gynaecology at Cornell University for ve decades. e collection is comprised of approximately four thousand items including books, pamphlets, prints, manuscripts, ephemera and realia. Also on display is the Second Life approach to Abraham Lincoln which includes several images from our collections.

A small exhibition on Charles Darwin marks the 150th celebration of his life and some items are on display within the Rare Books and Special Collections on Level 4 of the McLennan Library Building.

In addition, on the main entry oor of the Humanities and Social Sciences Library is a splendid exhibition on the Moravian beginnings of Canadian Inuit literature. Items displayed have been selected from McGill's Rare Books and Special Collections including e Lawrence Lande Collection of Canadiana, e Lande Eskimo Collection and e Lande Arkin Collection supplemented by the collections of McGill's Humanities & Social Sciences Library and McGill's Education Library.

is exhibition is part of the *En end e e co ni e e Moï d naï / ea - ing and a ing e Moïce o naï*, a joint Université du Québec à Montréal and McGill University initiative funded by the Canadian program of the International Polar Year (IPY), 2008-2011. is exhibition is also supported by a McGill University-SSHRC Institutional grant. It was made possible in part thanks to the AVATAQ



by Mutugi Gathuri & Greg Houston,  
Library Technology Services

The dynamic floor plans are interactive maps that visually indicate where items found in the catalogue are physically shelved in the library branch. When one clicks on the map icon for an item, a floor plan appears with the appropriate range highlighted. Users can manipulate the built-in zoom and pan tools to navigate around the map and to see detailed information close-up. Other features include a print option and an interactive legend.

The floorplans were created by converting existing floor plans into vector digital-based maps. The resulting dynamic floor plans are provided via a web interface to library clients and a backend

database containing information about the shelving ranges. There is a database interface that library staff can use for updates when changes to physical shelving are made.

Version 1 of the dynamic floorplans was launched for the Humanities and Social Sciences Library last September as a pilot project. Version 2 of the dynamic floorplans for the Schulich Library of the Science and Engineering Department should be available by this spring. Version 2 corrects some minor problems and incorporates feedback from library staff, such as making the map icon appear sooner in the search results page and displaying the title and author of the item sought on the floorplan. Version 2 changes will be applied to HSSL floorplans as well.

If no other changes or corrections are required, it is anticipated that the dynamic floor plans will be completed and available for all branches 3(a)-10(n)-1p Vil

## From Page to Stage: Shakespeare the Director

television career includes “Street Legal”, “Side Effects” and “Shades of Black.”

Albert Schultz has also directed several Soulpepper productions as well as Susan Coyne’s King Lear Days for the Tarragon Theatre. Schultz is the recipient of several awards including a Gemini Award, the Joan Chalmers National Award for Artistic Direction, Toronto Life Award to name a few. Mr. Schultz received an honorary doctorate at Queen’s University in 2008.

## Happy Anniversary - to both Charles Darwin and On the Origin of Species!

Albert Schultz Actor, director, and founding artistic director of Toronto’s Soulpepper Theatre Company

Thursday, March 19, 2009

5:00 – 6:00 p.m.

Moyse Hall

Arts Building, McGill University

853 Sherbrooke Street West

Reception to follow

RSVP by March 12

514-398-4681 Email

### Annual Shakespeare Lecture

presented by the Friends of the Library  
and Making Publics Project

**A**lbert Schultz studied drama at Toronto’s York University and the London Academy of Music and Dramatic Art. At the Stratford Festival, Mr. Schultz was in Romeo and Juliet, King Lear, Twelfth Night and As You Like It, and at Soulpepper held the title roles in Shakespeare’s Hamlet and Chekhov’s Platonov. Schultz’s

### Exhibition

The exhibit is open Monday – Friday,  
9:00 a.m. – 5:00 p.m.

Lande Reading Room, Rare Books and  
Special Collections

February 5 – March 31, 2009

**I**n honour of the 200th birthday of Charles Darwin, February 12, 1809 – the same day as Abraham Lincoln – and the 150th anniversary of the publication of his magnum opus On the Origin of Species – a small exhibit on Darwin, his books, and the reaction to the publication of the On the Origin of Species is

